

NEW PRODUCTS INSPIRATION GUIDE 2025



 **Pretty
Things.ro**

Natalia Răuță
natalia.rauta@prettythings.ro
Mobil: 0737 669 076







INTRODUCTION

ENDLESS POSSIBILITIES ON... NEW PRODUCTS

Welcome to our 2025 Inspiration Guide, a selection of exclusively NEW products, designed to meet your needs and to inspire you.

A collection of over 150 new products: from entry-price level products to Recycled Classics and new additions to our retail brands, you will find a match for every budget. With many customisation options to offer, the collection is perfectly suited to put your brand in the spotlight.

The possibilities are endless...

HOW CAN YOU CHOOSE A PRODUCT WITH A LOWER IMPACT?

There's more than one way to make a lower-impact choice. Opt for recycled materials, locally made products, or items with a lifetime warranty. Choosing products with certified supply chains or meaningful social impact stories also helps reduce your environmental footprint. Small decisions add up — choose what matters most to you.

HOW TO CHOOSE A LOWER IMPACT PRODUCT?

- **RECYCLED MATERIALS** – Made from previously used materials that are given a new life.
- **TRANSPARENT SUPPLY CHAIN** – Know where it's made, how it's made, and who made it.
- **LOCALLY PRODUCED** – Less transport and supports local jobs.
- **LONG LIFESPAN** – Durable design that reduces waste over time.
- **RECYCLABLE DESIGN** – Easy to separate and recycle after use.
- **PRODUCTS WITH A CERTIFICATION** – Verified by standards like GRS or OEKO-TEX®, for trace responsible sourcing.
- **SOCIAL IMPACT** - Supports fair work, communities, and environmental initiatives.

RECYCLED CLASSICS

In our pursuit of environmental responsibility, we launched new and recycled versions of our bestselling articles. We are striving to replace existing products with more sustainable alternatives.

The background image shows a hand reaching down to pick up a discarded plastic bottle from a sandy beach. The scene is set at sunset, with the sun low on the horizon, creating a warm, golden glow. The image is framed by large, diagonal green shapes. In the center, there is a circular logo with a teal recycling symbol and the text "RECYCLED CLASSICS".

RECYCLED
CLASSICS

able,

Let's move forward »
to a lower impact

PRODUCT CERTIFICATIONS & MEMBERSHIPS

Sustainability certifications help identify products that meet verified environmental and social standards. They offer transparency and build trust by showing that materials, production methods, and working conditions meet clear, independent criteria. These labels make it easier to make responsible, informed choices.



GRS – Certification ensuring recycled materials and responsible social environmental practices.



FSC – Certification promoting responsible forest management, ensuring sustainable timber production.



Aware™ – Unites a physical tracer with public blockchain technology for trusted traceability.



Certified by Control Union
CU 1019665

RCS – Verifies recycled content in products, ensuring supply chain transparency.



OEKO-TEX® – Certification ensuring textiles are free from harmful substances.



Better Cotton Initiative – The world's leading sustainability initiative for cotton.

An aerial photograph of a winding asphalt road cutting through a dense, lush green forest of tall evergreen trees. The image is framed by large, semi-transparent green geometric shapes: a triangle on the left and a larger shape on the right, creating a modern, graphic look. The text is centered over the road.

**Let's move
forward»**
to a lower impact

CONTENTS





CLOTHING



DRINKWARE



BAGS



PENS & NOTEBOOKS



TECHNOLOGY



GIFTS



HOME & KITCHEN



MAXIMISE IMPACT WITH THE RIGHT GIFT

Boost your brand visibility and create lasting impressions through thoughtful, branded items. The right gift can turn a simple gesture into a powerful connection with your audience. Whether you're speaking to Gen Z's conscious mindset, Millennials' experience-driven values, or Gen X's brand loyalty and practicality, knowing your target group ensures your gift truly resonates. A well-chosen gift shows you care and keeps your brand top of mind.



GEN Z







ELEVATE



NEW

39477 | 2XS-3XL ♀ | QUARTZ GRS RECYCLED QUILTED BODYWARMER |
GRS certified recycled nylon 100% | 2.721 kg CO₂e



ELEVATE



NEW
COLOURS

**39435 | XS-3XL ♂ | CALTHA INSULATED DOWN
BODYWARMER** | Polyester | 5.622 kg CO₂e
●●●●



NEW
COLOURS

**39339 | XS-3XL ♂ | MACIN INSULATED DOWN
JACKET** | Polyester | 5.622 kg CO₂e
●●●●

LANGLEY

SOFTSHELL JACKET



NEW
COLOURS




ELEVATE

ULTIMATE OUTDOOR PERFORMANCE

The jacket has a waterproof rating of 5000mm, keeping you dry and shielded from the elements. Its exceptional breathability, with a rating of 3000 g/m², wicks away moisture keeping you comfortable during intense activities.



39311 | XS-3XL ♂ 39312 | XS-XXL ♀ | LANGLEY SOFTSHELL JACKET |
Polyester 90%, Elastane 10% | 5.138 kg CO₂e
●●●●●



ELEVATE



NEW

38238 | 2XS-3XL ♀ | YUKON INTERLOCK SPORTS CREWNECK SWEATER |
Rayon 27%, Recycled Polyester 66%, Elastane 7% | 1.321 kg CO₂e



ELEVATE



OMOMO

NEW

38239 | 2XS-3XL ♀ | DANALI INTERLOCK SPORTS HOODIE |
Rayon 27%, Elastane 7%, Recycled Polyester 66% | 1.441 kg CO₂e



ELEVATE



NEW
COLOURS

38235 | 2XS-3XL ♀ | LAGUNA HOODIE |
BCI cotton, Polyester | 3.515 kg CO₂e
●●●●●●●●



ELEVATE



NEW
COLOURS

38211 | 2XS-3XL ♂ | ARORA FULL ZIP HOODIE |
Polyester, BCI cotton | 3.515 kg CO₂e
●●●●●●●●

RECYCLED CORDUROY



NEW

111073 | HUTTON 6 PANEL RECYCLED CORDUROY CAP |
Cotton 20%, Recycled cotton 80% | 0.035 kg CO₂e



ELEVATE



NEW

111072 | HOWSON RECYCLED CORDUROY SUN HAT |
Cotton 20%, Recycled cotton 80% | 0.035 kg CO₂e





NEW

38687 | GRAFTON 6 PANEL WASHED CAP |
Cotton 100% | 0.094 kg CO₂e
●●●●●



NEW

111075 | MITICA WASHED SUN HAT |
Cotton 100% | 0.095 kg CO₂e
●●●●●





☐
☐
☐
ELEVATE

111074 | BARU SHERPA SUN HAT |
Polyester 100% | 0.095 kg CO₂e
○●



111076 | HATCH FOLDABLE SUN HAT |
Polyester 100% | 0.095 kg CO₂e
○●●

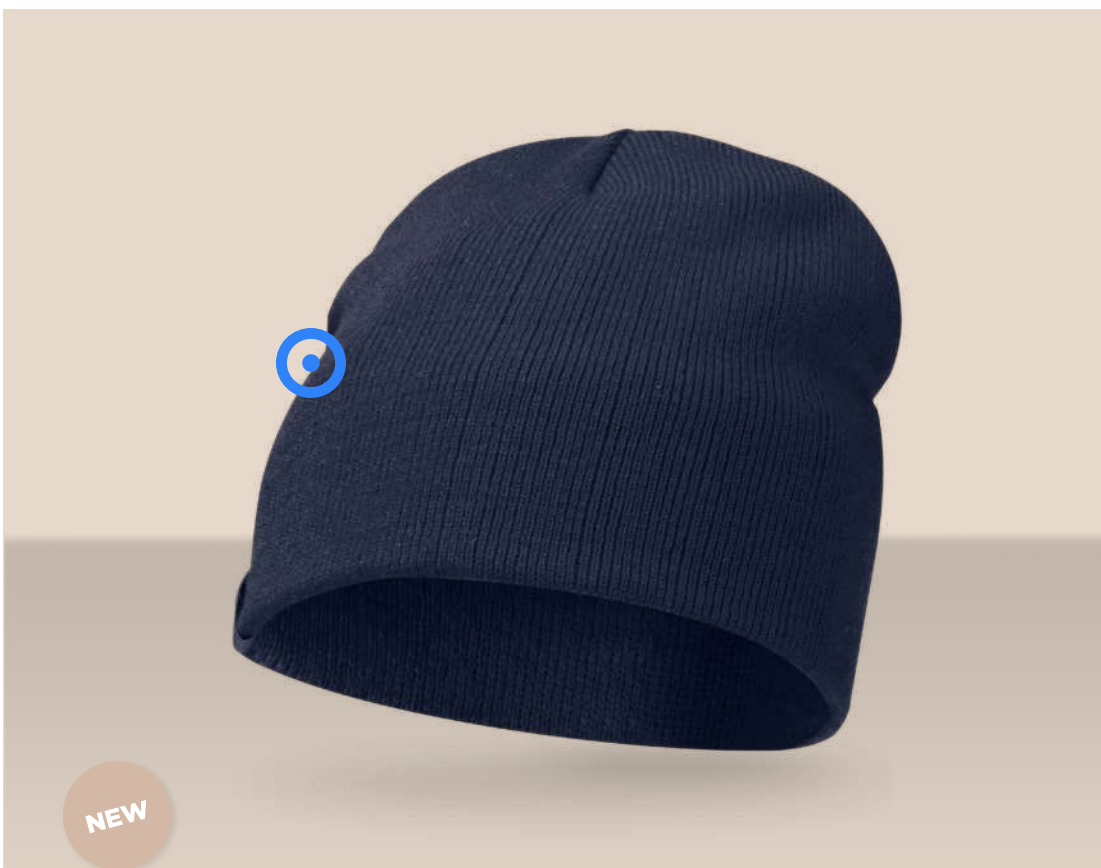


NEW
COLOURS

111069 | TRUCKER 5 PANEL CAP |
Polyester 100% | 0.095 kg CO₂e
●●●●●●●



111043 | IRWIN BEANIE |
Acrylic | 19 x 23 cm | 0.167 kg CO₂e
●●●●●●●●●●



111071 | IZU BEANIE |
Acrylic 100% | 0.167 kg CO₂e
●●●●●●●●●●



38676 | BOREAS BEANIE WITH PATCH |
Acrylic 100% | 19 x 23 cm | 0.167 kg CO₂e
●●●●●●●●●●●●●●●●

LARQ



YOU ARE WHAT YOU DRINK. SO DRINK BRILLIANTLY

LARQ began with a simple vision where innovative technology can be combined with inspirational design to help people access pristine drinking water easily and sustainably. Product innovation is driven by a single purpose - making it easy to opt for the healthier and more sustainable hydration choice, anytime and anywhere.

The award winning lineup of hydration products improves water quality, taste and overall convenience so reaching for that single-use bottle is never a better option.

DRINK WITH A PURPOSE

Committed to sustainability, a portion of every LARQ purchase gives back, funding environmental nonprofits around the world as well as bringing safe drinking water to billions of people worldwide.

Learn more >>

INTRODUCING
OUR NEW BRAND,
LARQ

Stock available as of September



NEW

100836 | ALTI 630 ML RCS RECYCLED PLASTIC WATER BOTTLE |
Recycled PP Plastic 100% | Ø 6.6 x 6.6 x 22.8 x 6.6 cm | 0.228 kg CO₂e



ILLUMINATE

600ML



NEW
COLOURS

100803 | ILLUMINATE 600 ML RPET WATER BOTTLE |
Recycled PET Plastic 90% | Ø 6.5 x 6.8 x 23.5 x 6.8 cm | 0.382 kg CO₂e
●●●●●●●●



RECYCLED
CLASSICS

NEW

**100870 | FITZ 800 ML RCS RECYCLED SINGLE WALL STAINLESS
STEEL WATER BOTTLE** | RCS certified recycled stainless steel
91% | Ø 7.3 x 7.3 x 25.4 x 7.3 cm | 1.004 kg CO₂e
●●●●●



RECYCLED
CLASSICS

NEW

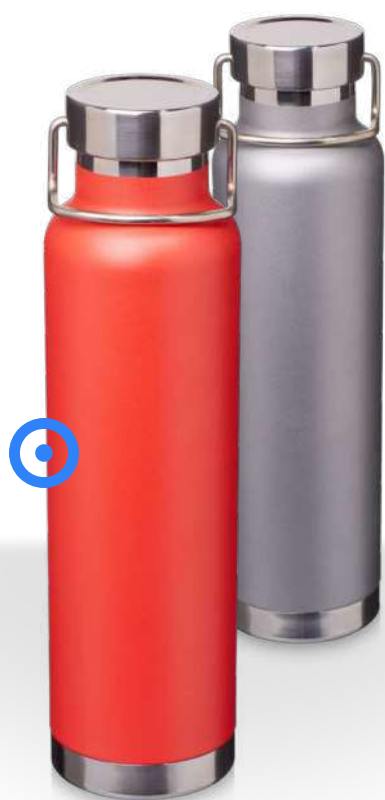
**100868 | SKY 650 ML RCS RECYCLED SINGLE WALL STAINLESS
STEEL WATER BOTTLE** | RCS certified recycled stainless steel
91% | Ø 6.6 x 6.6 x 26.3 x 6.6 cm | 0.834 kg CO₂e
●●●●●●●●



NEW
COLOURS

100657 | THOR 550 ML WATER BOTTLE |
Stainless Steel | Ø 7.4 x 18.8 cm | 1.259 kg CO₂e

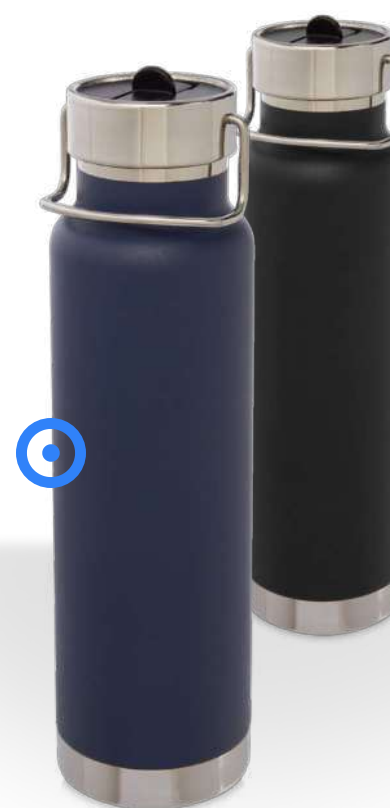




100488 | THOR 650 ML COPPER VACUUM INSULATED SPORT BOTTLE | Stainless Steel 100% | Ø 7.3 x 27.2 cm | 2.801 kg CO₂e
●○○●●●



100673 | THOR 1 L COPPER VACUUM INSULATED WATER BOTTLE | Stainless Steel 100% | Ø 8.3 x 28.9 cm | 3.074 kg CO₂e
○○●●



100732 | THOR 750 ML COPPER VACUUM INSULATED SPORT BOTTLE | Stainless Steel 100% | 7.7 x 7.7 x 28.2 cm | 3.026 kg CO₂e
○○●●



100819 | THOR 500 ML RCS CERTIFIED RECYCLED STAINLESS STEEL WATER BOTTLE | RCS certified recycled stainless steel 100% | Ø 4.8 x 7.2 x 20 x 7.2 cm | 1.340 kg CO₂e
○○●●●●●●

THOR SERIES

OREGON SERIES





RECYCLED
CLASSICS



NEW

100871 | OREGON 400 ML MATTE RCS RECYCLED SINGLE WALL STAINLESS STEEL WATER BOTTLE WITH CARABINER | RCS certified recycled stainless steel 91% | 6.6 x 17.6 cm | 0.549 kg CO₂e
○●●●●

RECYCLED
CLASSICS



NEW

100872 | OREGON 750 ML MATTE RCS RECYCLED SINGLE WALL STAINLESS STEEL WATER BOTTLE WITH CARABINER | RCS certified recycled stainless steel 91% | Ø 7.25 x 7.25 x 24 x 7.25 cm | 0.843 kg CO₂e
○●●●●



100778 | OREGON 400 ML RCS CERTIFIED RECYCLED PLASTIC WATER BOTTLE WITH CARABINER | Recycled PET Plastic | Ø 4.3 x 6.7 x 18.3 x 6.7 cm | 0.210 kg CO₂e
○●●●●●●●●●●



100860 | OREGON 400 ML RCS CERTIFIED SINGLE WALL STAINLESS STEEL WATER BOTTLE WITH CARABINER | Recycled stainless steel 91%, PP Plastic 9% | Ø 3.3 x 6.6 x 17.6 x 6.6 cm | 0.582 kg CO₂e
○●●●●●●●●●●



100861 | OREGON 750 ML RCS CERTIFIED SINGLE WALL STAINLESS STEEL WATER BOTTLE WITH CARABINER | Recycled stainless steel 91%, PP Plastic 9% | Ø 3.5 x 7.25 x 24.2 x 7.25 cm | 0.996 kg CO₂e
○●●●●●●●●●●



COVE

SERIES

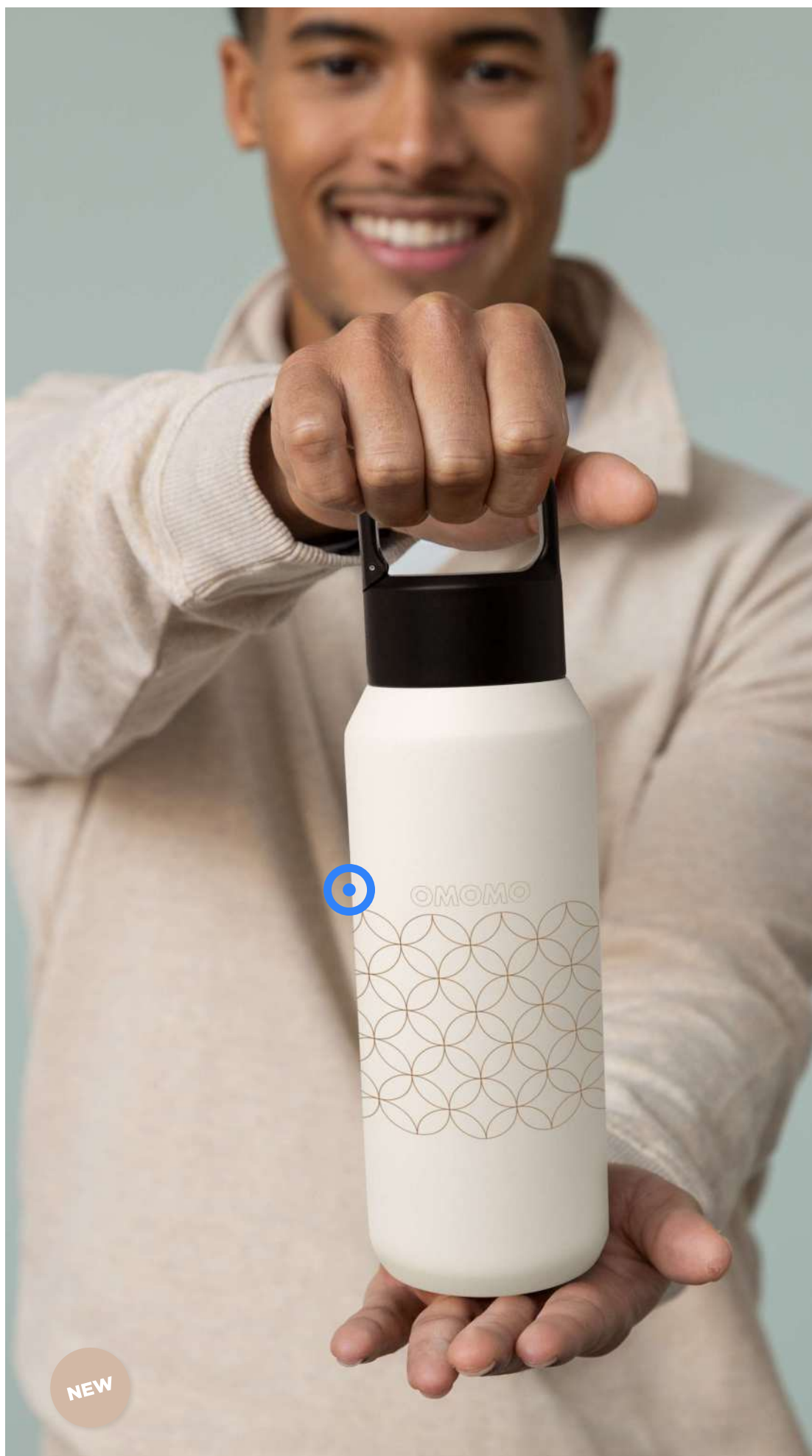


NEW

100892 | COVE 500 ML DOUBLE WALL VACUUM INSULATED
STAINLESS STEEL WATER BOTTLE WITH CORK DETAILS | Stainless
Steel 90% | Ø 7.1 x 7.1 x 26.3 x 4.2 cm | 2.541 kg CO₂e
●●●



PERFECT FOR **CARBONATED** DRINKS



NEW

100841 | ASTRA 600 ML RCS CERTIFIED RECYCLED STAINLESS STEEL COPPER VACUUM INSULATED WATER BOTTLE | RCS certified recycled stainless steel 80% | Ø 7.8 x 7 x 25 x 7 cm | 2.055 kg CO₂e
●●●○



NEW

100842 | FORTIS 700 ML RCS CERTIFIED RECYCLED STAINLESS STEEL COPPER VACUUM INSULATED WATER BOTTLE | RCS certified recycled stainless steel 90% | Ø 7 x 9 x 26 x 7 cm | 2.361 kg CO₂e
○●●●●

SEASONS



NEW

126397 | MALE 90 ML CERAMIC ESPRESSO CUPS - SET OF 2 |
Ceramic 100% | 6.2 x 5.8 x 5.8 cm | 0.936 kg CO₂e
○○●





SEASONS



NEW
COLOURS

113317 | MALE 4-PIECE 90 ML ESPRESSO CUP |
Ceramic | Ø 5.8 x 6.2 cm | 1.871 kg CO₂e
○○●

SEASONS



NEW

126400 | MALE 200 ML GLASS CUPS - SET OF 2 |
Borosilicate glass 100% | 8.2 x 7.5 x 7.5 cm | 0.676 kg CO₂e
○○●

SEASONS



NEW

126399 | MALE 200 ML CERAMIC CUPS - SET OF 2 |
Ceramic 100% | 9.3 x 8.2 x 8.2 cm | 1.078 kg CO₂e
○●

SEASONS



NEW

126396 | MALE 350 ML CERAMIC CUPS - SET OF 2 |
Ceramic 100% | 8.2 x 8.2 x 11.5 cm | 1.444 kg CO₂e
○○●

CARTER

450ML





100896 | CARTER 450 ML CERAMIC MUG WITH PLASTIC LID |
Stoneware 90% | Ø 8.2 x 12.6 x 14.1 x 8.2 cm | 1.770 kg CO₂e
○○●



NEW

**100887 | CAMELBAK® THRIVE 750 ML TRITAN RENEW
WATER BOTTLE WITH SCREW CAP** | Tritan™ Renew
100% | 18.1 x 8.3 x 7.8 cm | 1.770 kg CO₂e
○●●●



NEW

**100889 | CAMELBAK® THRIVE 750 ML STAINLESS STEEL
WATER BOTTLE WITH SCREW CAP** | Stainless Steel
100% | 30.6 x 83 x 78 cm | 3.976 kg CO₂e
●○○●



NEW

100888 | CAMELBAK THRIVE FLIP STRAW VSS 750ML | Stainless
Steel 100% | 30.6 x 86 x 78 cm | 4.067 kg CO₂e
●○○●

CAMELBAK®



NEW

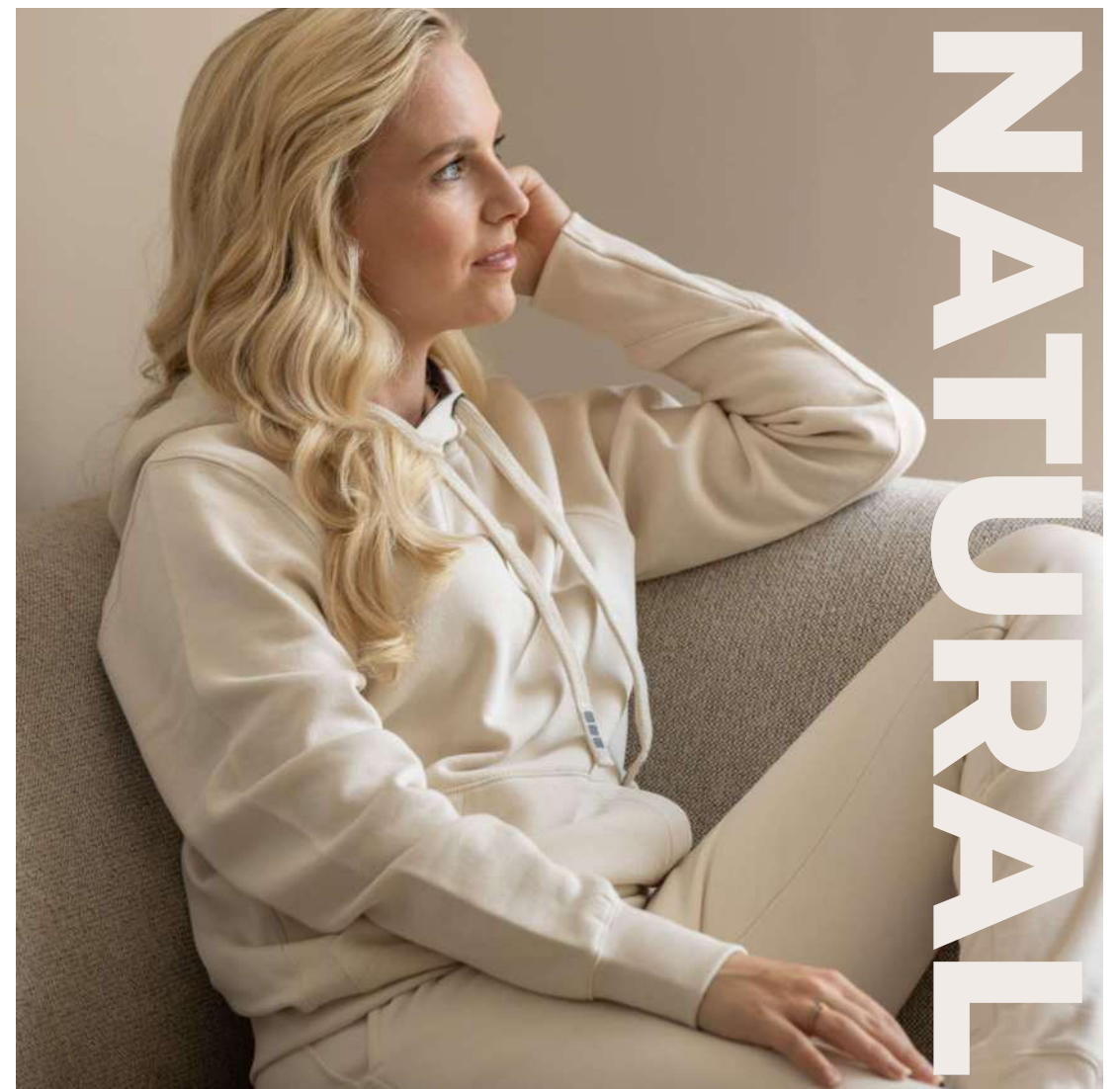
**100886 | CAMELBAK® THRIVE 750 ML TRITAN RENEW
WATER BOTTLE WITH FLIP STRAW | Tritan™ Renew**

100% | 18.9 x 8.6 x 7.8 cm | 1.848 kg CO₂e



WHY TRENDS MATTER FOR YOUR BRAND

In today's fast-moving market, standing out isn't just about what you say—it's about how you look. Trend-driven product choices show that your brand is modern and attentive. Trend colors spark attention, build connection, and reflect cultural energy. From subtle neutrals to bold statements, color isn't just decoration—it's strategy. Infuse your product media with today's top colors and let your brand speak in the tones of now. Strengthen your brand communication by making every touchpoint feel timely and authentic.





BAGS



NEW

130098 | NOMAD GRS RECYCLED RUNNING VEST HYDRATION PACK
5L | GRS certified recycled polyester 100% | 28 x 36 cm | 0.551 kg CO₂e
●●●

NOMAD

SERIES



NEW

130101 | NOMAD GRS RECYCLED HYDRATION
CROSSBODY BAG 6L | GRS certified recycled polyester
100% | 21 x 9 x 37.5 cm | 0.496 kg CO₂e
●●●



130100 | NOMAD GRS RECYCLED YOGA TOTE BAG 18L
| GRS certified recycled polyester 100% | 40 x 14 x 34 cm | 0.690 kg CO₂e
●●●



130102 | NOMAD GRS RECYCLED RUNNING WAIST PACK
| GRS certified recycled polyester 100% | 49 x 11.5 cm | 0.291 kg CO₂e
●●●



130099 | NOMAD GRS RECYCLED SPORTS DRAWSTRING BAG WITH BOTTOM COMPARTMENT 18L | GRS certified recycled polyester 100% | 29 x 12 x 47 cm | 0.681 kg CO₂e
●●●



NEW

130103 | ECOSEAL GRS RECYCLED NONWOVEN TOTE BAG 5L |
GRS certified recycled polyester 100% | 34 x 43 cm | 0.070 kg CO₂e
○●●●●●



NEW

**130105 | ECOSEAL GRS RECYCLED NONWOVEN
CONVENTION TOTE BAG 6L |** GRS certified recycled polyester
100% | 36 x 40 cm | 0.079 kg CO₂e
○●●●●●



SERIES





120659 | BYRON 15.6" GRS RPET ROLL-TOP BACKPACK 18L | GRS certified recycled polyester 100% | 11 x 28 x 41 cm | 0.961 kg CO₂e



NEW
COLOURS



130053 | BYRON GRS RECYCLED CROSSBODY BAG 2L | GRS certified recycled polyester | 17 x 5 x 23.5 cm | 0.302 kg CO₂e





NEW

**130097 | ROVER 24" GRS RECYCLED EXPANDABLE
TROLLEY 70L** | GRS certified recycled ABS
100% | 26.5 x 41 x 66 cm | 9.435 kg CO₂e
●●



120769 | SWIFT GRS RECYCLED VELVET TOILETRY BAG SET | GRS certified recycled polyester 100% | 32 x 8 x 21 cm | 0.288 kg CO₂e



120768 | SWIFT GRS RECYCLED TOILETRY BAG SET | GRS certified recycled polyester 100% | 32 x 8 x 21 cm | 0.242 kg CO₂e



120745 | CRESCENT 500 G/M² AWARE™ RECYCLED CROSSBODY BAG | Recycled cotton 70%, Recycled Polyester 30% | 27 x 8 x 13 cm | 1.536 kg CO₂e



120190 | GRAPHITE DELUXE 15" LAPTOP BACKPACK 20L | Polyester | 31 x 16 x 45 cm | 4.033 kg CO₂e





TRIP AWARE™ SERIES

From quick day trips to longer journeys, these bags are purpose-built with many clever storage features, clean silhouettes, and versatile designs. Whether you need space for tech, toiletries, travel documents, or daily essentials, every bag is made to simplify your experience without compromising style. Each piece is also made with a commitment to sustainability, enabling full transparency into the product's origin through a QR code — a commitment to more conscious choices at every stage of travel.



use in mind. Whether you're carrying
ce comes with an Aware™ tracer,
vel.



NEW

120762 | TRIP 14" AWARE™ RECYCLED TRAVEL LAPTOP BACKPACK
9L | Recycled Polyester 100% | 9 x 27 x 38 cm | 1.199 kg CO₂e
○●●



NEW

120763 | TRIP AWARE™ RECYCLED TRAVEL DUFFEL BAG
42L | Recycled Polyester 100% | 25 x 48 x 35 cm | 1.592 kg CO₂e
○●●



120765 | TRIP AWARE™ RECYCLED TRAVEL BOTTLE BAG
2L | Recycled Polyester 100% | 10 x 10 x 21 cm | 0.372 kg CO₂e
●●○



NEW

120766 | TRIP AWARE™ RECYCLED TRAVEL TOILETRY BAG
6L | Recycled Polyester | 14.5 x 23 x 18.5 cm | 0.418 kg CO₂e
○●●



NEW

120764 | TRIP AWARE™ RECYCLED TRAVEL CROSSBODY BAG
1L | Recycled Polyester 100% | 5 x 18.5 x 14 cm | 0.394 kg CO₂e
○●●



NEW

120767 | TRIP AWARE™ RECYCLED TRAVEL TOILETRY POUCH
2L | Recycled Polyester 100% | 6 x 24 x 14.5 cm | 0.163 kg CO₂e
○●●

TRIP AWARE™ SERIES

RESI PLUS





130093 | RESI PLUS 15" GRS RECYCLED ROLL-TOP BACKPACK 18L | GRS recycled PU 100% | 29 x 12 x 56 cm | 1.358 kg CO₂e
●●●●●●

Crafted from recycled premium PU leather and colour matching RPET lining details, this rolltop backpack merges with on-trend style with eco-conscious durability. The water-resistant finish keeps your essentials protected, while the rolltop closure offers flexible storage — whether you're commuting, traveling, or heading to the gym. Inside, a padded compartment secures laptops up to 15.6", with an additional zipped pocket to keep your tech and daily carry organized. On the outside, featuring a zipped front pocket with waterproof zip, padded & adjustable shoulder straps and a breathable back panel ensure all-day comfort.





NEW

120774 | BEAR GRS RECYCLED SHERPA WAIST BAG 3L | GRS
certified recycled polyester 100% | 33 x 7 x 16 cm | 0.424 kg CO₂e
●●



NEW

**120775 | BEAR 13" GRS RECYCLED SHERPA LAPTOP
SLEEVE 2L** | GRS certified recycled polyester
100% | 33.5 x 2 x 24 cm | 0.484 kg CO₂e
●●



NEW

**120773 | BEAR GRS RECYCLED SHERPA DRAWSTRING
BACKPACK 9L** | GRS certified recycled polyester
100% | 34 x 1.5 x 44 cm | 0.666 kg CO₂e
○●



THULE[®]
SWEDEN

BUILT TO LAST

Striving to design products that they are proud of both today and in the future by making conscious and insightful choices, Thule ensures product longevity through durability and resilience as well as with aesthetics that remain relevant over time.



NEW



120758 | THULE ACHIEVER 16" LAPTOP BACKPACK |
Nylon 50%, Polyester 50% | 45 x 28 x 25 cm | 5.806 kg CO₂e



NEW



120759 | THULE LUMION 16" RECYCLED LAPTOP BACKPACK |
Recycled Polyester 100% | 46 x 30 x 15 cm | 1.960 kg CO₂e

UNBOX THE UNEXPECTED. GIFTING WITH ENDLESS POSSIBILITIES

Gifting is more than a seasonal tradition—it's a strategic opportunity to strengthen relationships. But one size doesn't fit all. The perfect gift for a loyal customer isn't the same as what will resonate with a valued employee. Discover what works best for which audience.



WM
WELLmark



MEANINGFUL GIFTS FOR EMPLOYEES

Employees value gifts that are personal and support their well-being. Think of self-care products from trusted brands like Wellmark, cosy blankets, stylish humidifiers, or other items personalised with their name.

Why do these gifts make an impact?

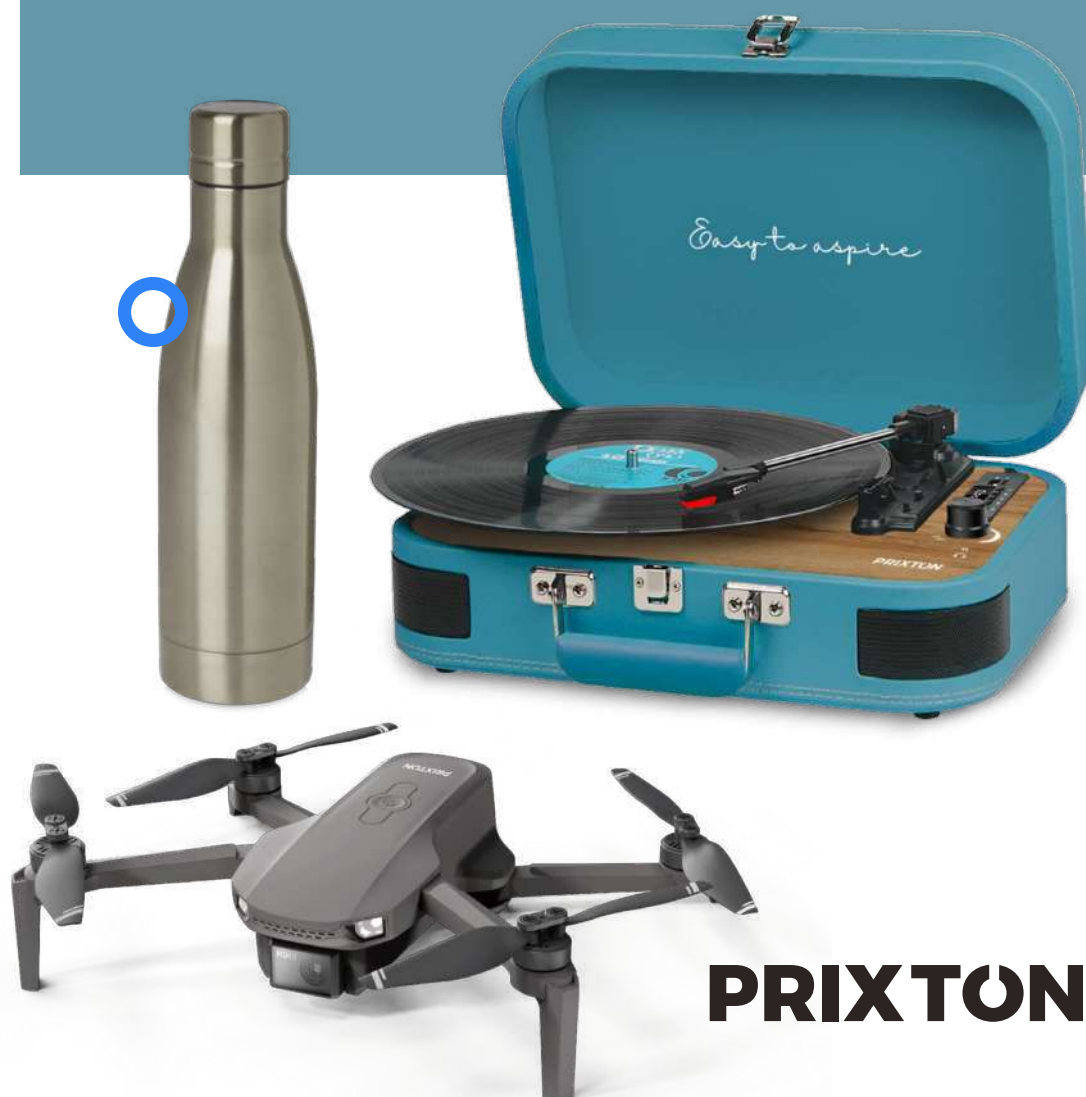
- **ENCOURAGES REST AND MENTAL WELL-BEING** – A subtle reminder to relax and recharge.
- **PERSONAL TOUCH** – Personalised gifts feel thoughtful and unique.
- **SHOWS YOU CARE** – Show your employees that they are more than just their job.

THE PERFECT GIFT FOR CUSTOMERS

Premium, practical items like branded laptop backpacks, bottles, notebooks and pens are a perfect mix of thoughtful and useful for customers.

Why are these gifts so successful?

- **HIGH USABILITY** - They're items people reach for daily.
- **LONG RETENTION** - Quality products stay in use, keeping your brand top of mind.
- **PERCEIVED HIGH VALUE** - Well-designed, branded gifts reflect positively on your business.



PRIXTON

THULE
SWEDEN





106296 ♦ | NASH RECYCLED PLASTIC BALLPOINT PEN WITH BLACK TRIMS
| Recycled ABS Plastic 100% | Ø 1.3 x 13.9 cm | 0.029 kg CO₂e |





NEW

106297  | 106299  | IPE RCS RECYCLED BALLPOINT PEN |
Recycled ABS Plastic 100% | 1 cm | 0.021 kg CO₂e |


Don't
Forget!





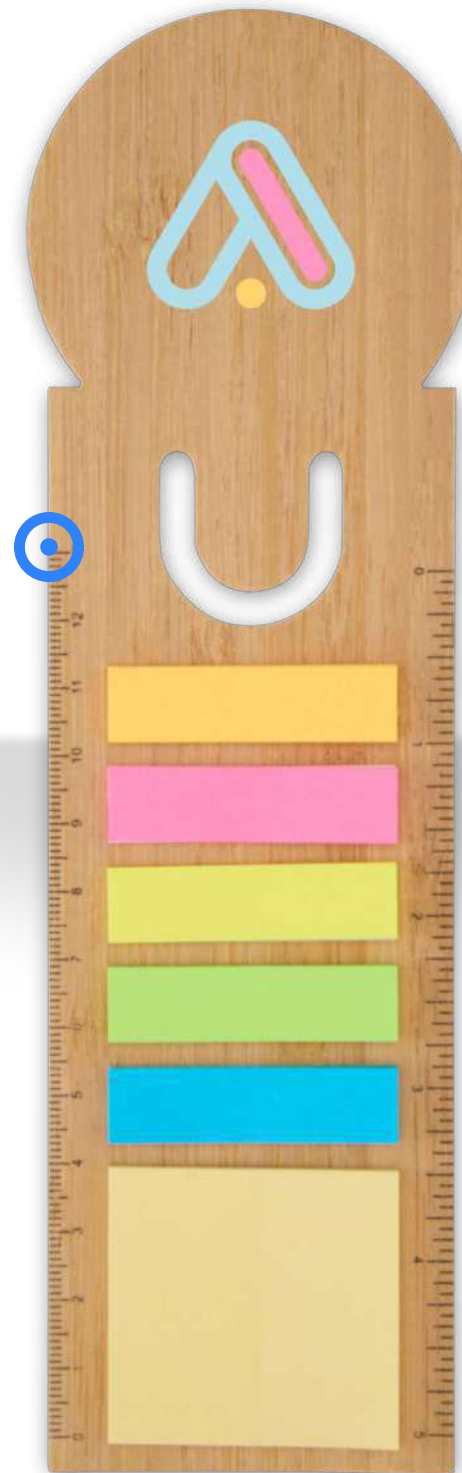
NEW

106286 | FREIJO STICKY NOTES | FSC certified paper
100% | 8.5 x 8.5 cm | 0.036 kg CO₂e



NEW

106294 | FREIJI STICKY NOTES | FSC certified
paper | 8.5 x 12.3 cm | 0.031 kg CO₂e



NEW

106295 | FREI STICKY NOTES | FSC certified paper
100% | 5.9 x 21.4 cm | 0.030 kg CO₂e



NEW

**107980 | SLYKEN A5 REFILLABLE NOTEBOOK WITH TWO
CAHIERS** | FSC certified paper 100% | 2.5 x 14 cm | 0.117 kg CO₂e



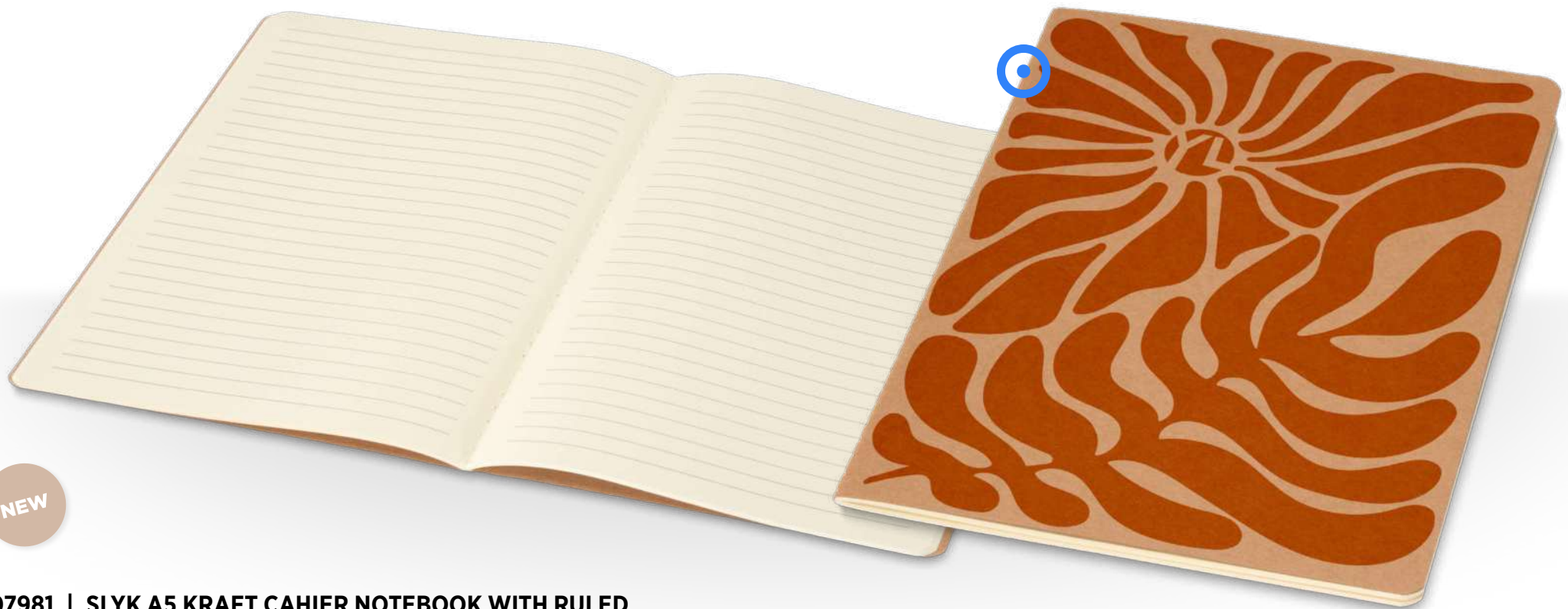
NEW

106249 | SLYK A5 CAHIER PLANNER | FSC certified paper 100% | 14.8 x 21 cm | 0.127 kg CO₂e



NEW

106251 | SLYK A5 KRAFT CAHIER NOTEBOOK WITH DOTTED PAGES | FSC certified paper 100% | 14.8 x 21 cm | 0.127 kg CO₂e



NEW

107981 | SLYK A5 KRAFT CAHIER NOTEBOOK WITH RULED PAGES | FSC certified paper 100% | 20.5 x 14 cm | 0.117 kg CO₂e



NEW

106257 | ALDER A5 HARD COVER NOTEBOOK | FSC certified paper
100% | Ø 15.3 x 21.5 cm | 0.930 kg CO₂e



NEW

107993 | ANDEAN A5 RCS RECYCLED PORTFOLIO | FSC certified
paper 100% | 20 x 17 cm | 0.498 kg CO₂e



NEW

106298 | NIOVE RECYCLED PLASTIC SOFT COVER
NOTEBOOK AND BALLPOINT PEN SET | Recycled PP Plastic
100% | 14 x 17.8 cm | 0.376 kg CO₂e
○ ● ● ●

LUXE



NEW

**106258 | LEGATO ELEGANCE A5 HARD COVER NOTEBOOK
AND ROLLERBALL PEN SET** | FSC certified paper

100% | 19.2 x 22.5 cm | 0.611 kg CO₂e





Step into a world where light mingles with sound and design becomes an experience. Since 2017, Kooduu has dedicated itself to crafting moments of joy, rooted in Danish and Dutch innovation.

Kooduu's products seamlessly blend light and audio, creating a multi-functional experience that enhances any space. Products are designed to enrich both indoor and outdoor settings, creating the perfect ambiance for any occasion.

Merging the elegance of Scandinavian design with cutting-edge technology to transform any setting into a haven of ambiance and connection, creating multi-functional masterpieces that blend light and audio, perfect for enriching both indoor and outdoor spaces.

Learn more >>

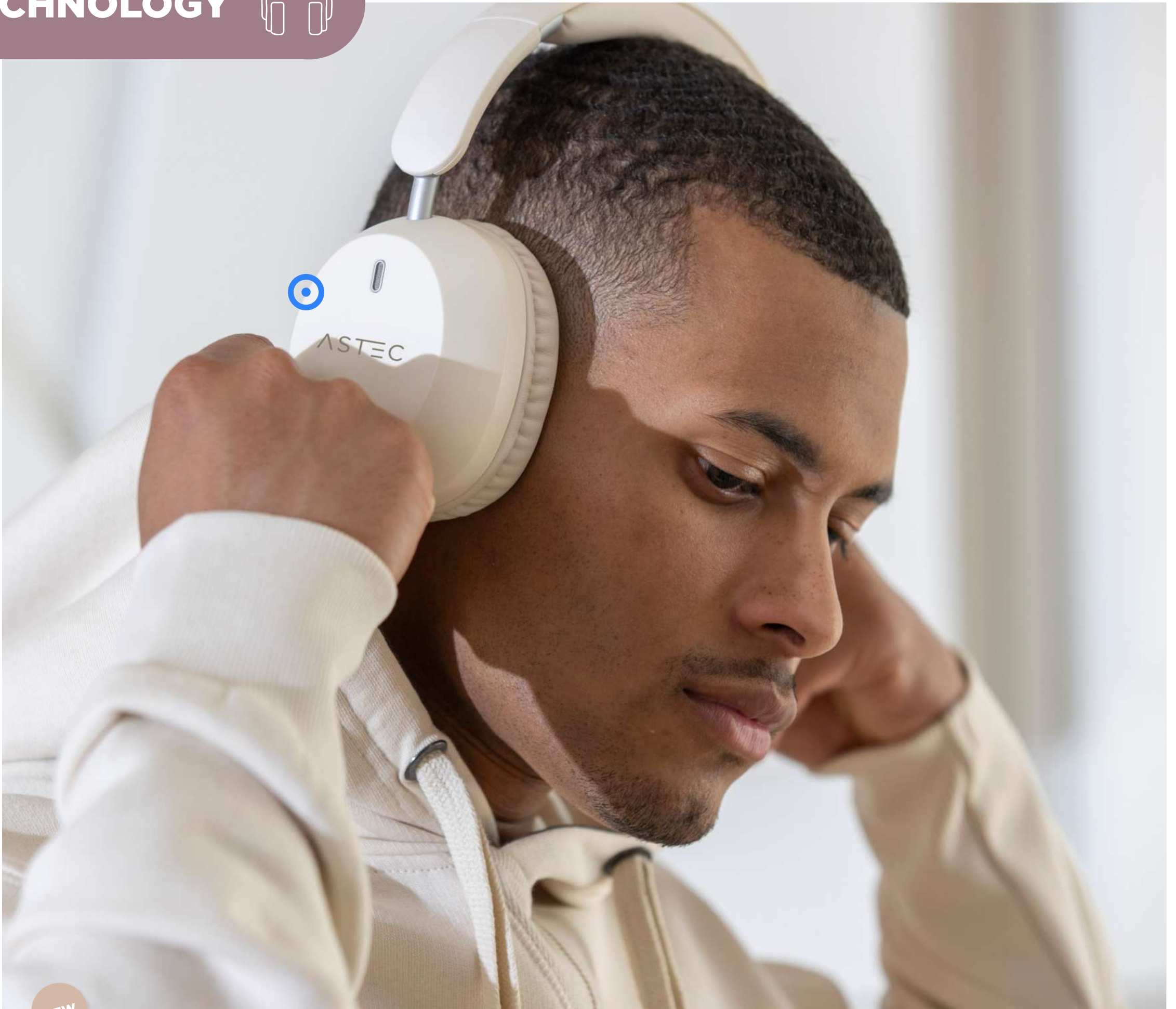


SET THE MOOD. WHEREVER. WHENEVER.

kooduu

INTRODUCING
OUR NEW BRAND,
Kooduu

Stock available as of September



NEW

**124473 | HOGGAR RECYCLED PLASTIC OVER-EAR FOLDEABLE
ANC AND ENC HEADPHONES** | Recycled ABS Plastic

100% | 15.9 x 21 x 8 cm | 5.081 kg CO₂e





NEW

124452 | HORNA 3W RECYCLED PLASTIC MAGNETIC WIRELESS SPEAKER | ABS Plastic 100% | 5.7 x 3.6 cm | 4.800 kg CO₂e



NEW

124454 | HUNOR 3W RECYCLED PLASTIC WIRELESS SPEAKER | Recycled ABS Plastic 100% | 6 x 6.8 cm | 4.762 kg CO₂e





NEW

124460 | AGGIA BAMBOO PHONE STAND WITH RECYCLED PLASTIC FIDGET TOY | Bamboo 100% | 6.9 x 2 x 1.6 cm | 0.033 kg CO₂e
 ○●●●



NEW

124467 | ALHENA RECYCLED PLASTIC FOLDEABLE PHONE HOLDER WITH METAL DESK STAND | ABS Plastic 100% | 12 x 6.8 x 2.9 cm | 0.929 kg CO₂e
 ○●



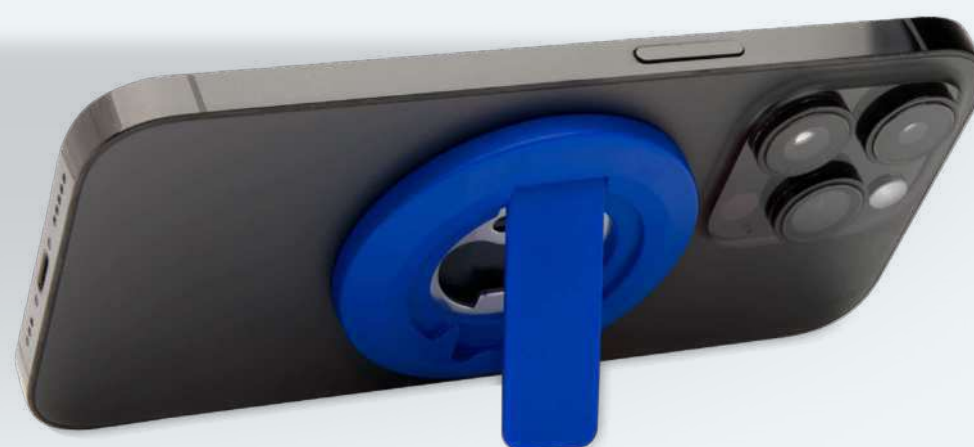
NEW

**124462 | ALBALI RECYCLED PLASTIC MAGNETIC PHONE
HOLDER WITH RING STAND** | Recycled ABS Plastic
100% | Ø 5.76 cm | 0.079 kg CO₂e
○●



NEW

**124461 | AIN RECYCLED PLASTIC MAGNETIC PHONE
STAND WITH BOTTLE OPENER** | Recycled ABS Plastic
100% | Ø 5.76 cm | 0.065 kg CO₂e
○●●●





NEW

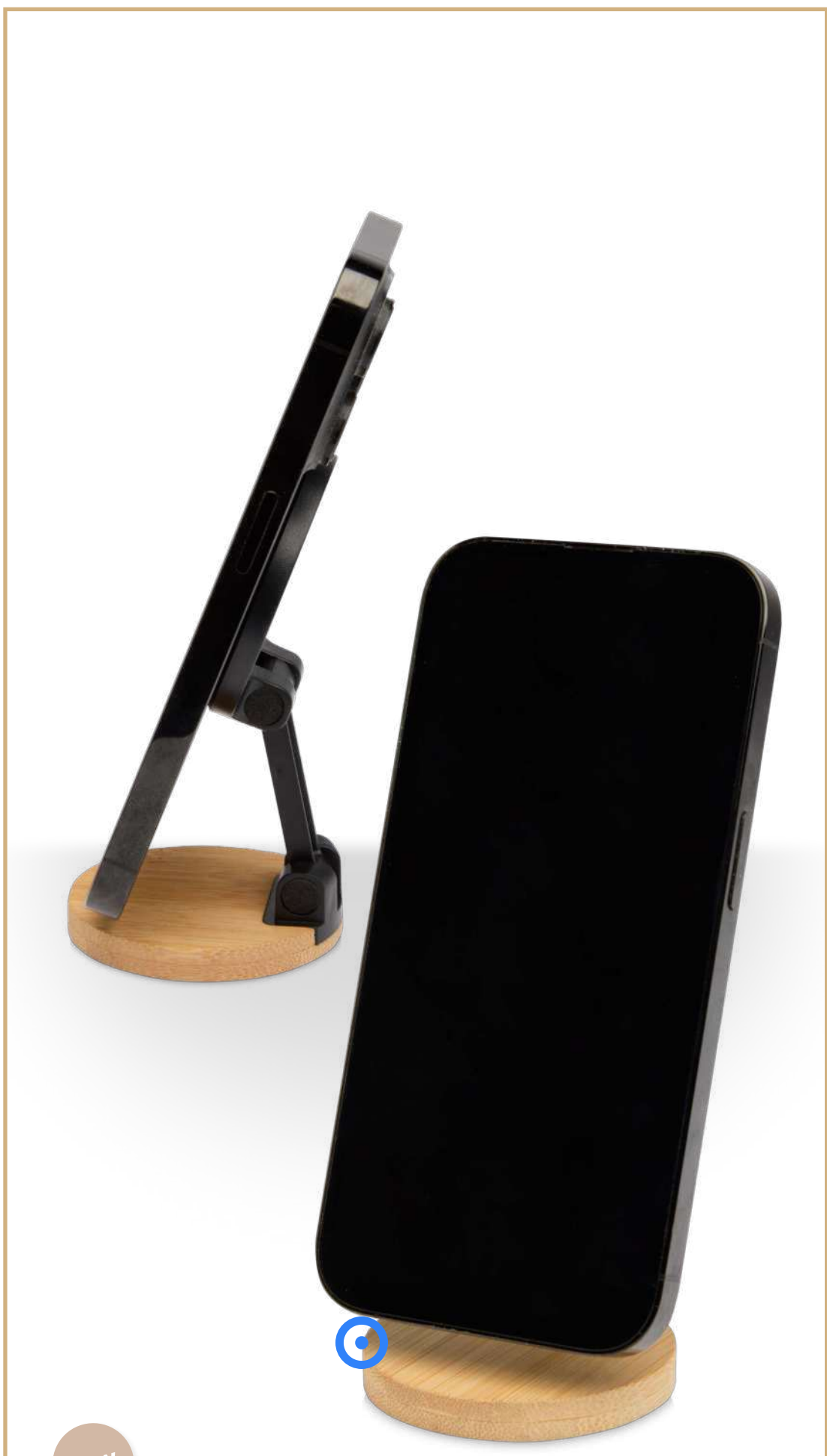
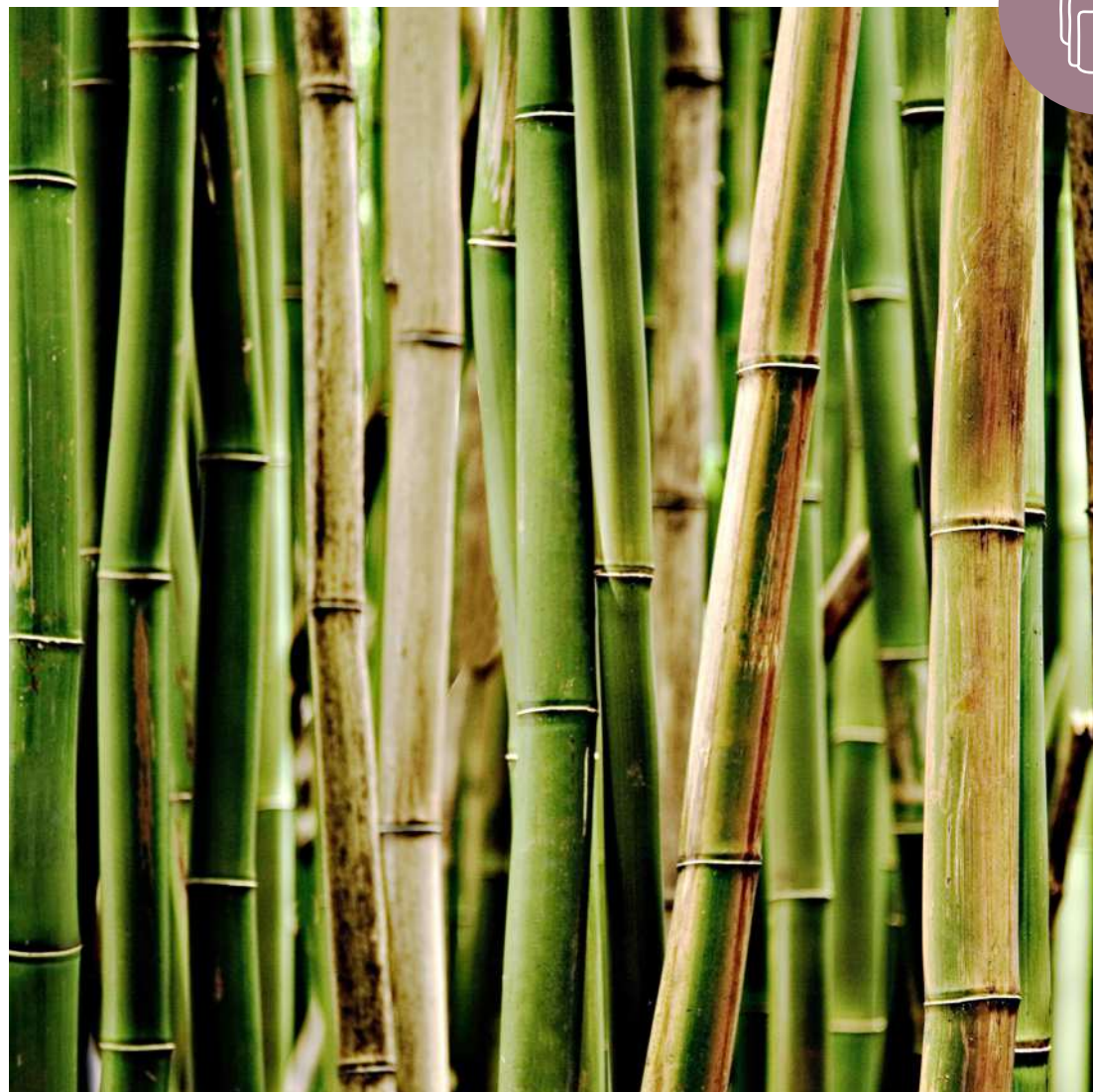
124456 | ADHAB SMARTPHONE LANYARD WITH BAMBOO DETAILS | Bamboo 100% | 55 x 1 cm | 0.037 kg CO₂e



NEW

124466 | ALGOL RECYCLED PLASTIC PHONE STAND AND FIDGET TOY WITH BAMBOO DETAILS | Bamboo 100% | 8 x 6 x 2.5 cm | 0.081 kg CO₂e





NEW

124463 | ALCOR RECYCLED PLASTIC FOLDEABLE MAGNETIC PHONE STAND WITH BAMBOO DETAILS | Bamboo

100% | Ø 6 x 2.5 cm | 0.087 kg CO₂e



NEW

124464 | ALFIRK RECYCLED PLASTIC FOLDEABLE DESK PHONE STAND WITH BAMBOO DETAILS | Bamboo

100% | 12 x 6.8 x 2.9 cm | 0.164 kg CO₂e





NEW

124449 | GAIA 4-PORT USB HUB WITH USB-A AND TYPE-C OUTPUT AND DUAL INPUT - MADE FROM RECYCLED PLASTIC | Recycled ABS Plastic 100% | 5.3 x 4.3 x 1.1 cm | 4.609 kg CO₂e

●



NEW

124469 | ALKAID 4-PORT RECYCLED ALUMINIUM USB-A AND TYPE-C HUB WITH DUAL INPUT | Recycled Aluminium 100% | 29 x 0.7 cm | 4.634 kg CO₂e

○



NEW

124448 | GLOAS 5-IN-1 RECYCLED RETRACTABLE DATA SYNC AND 100W FAST CHARGE CABLE WITH SMARTPHONE TOOL KIT | Recycled ABS Plastic 100% | 6.5 x 6.5 x 2.1 cm | 4.673 kg CO₂e
○●



NEW

124447 | FRANZ RECYCLED PLASTIC SMARTPHONE LANYARD WITH BUILT-IN DATA SYNC AND 65W FAST CHARGE 5-IN-1 CABLE | Recycled ABS Plastic 100% | 61.5 x 1.5 cm | 4.634 kg CO₂e
○●



NEW

124453 | FUNI RECYCLED PLASTIC SMARTPHONE LANYARD WITH BUILT-IN DATA SYNC AND 100W FAST CHARGE 5-IN-1 CABLE | ABS Plastic 100% | 130 x 0.5 cm | 4.728 kg CO₂e
●



124470 | ALKES 5000 MAH 12W RECYCLED PLASTIC WATER RESISTANT POWER BANK WITH CARABINER | Recycled ABS Plastic 100% | 14.7 x 5.4 x 1.8 cm | 4.758 kg CO₂e

●●



124471 | ALTAIR 5000 MAH 10W RECYCLED PLASTIC RUGGED SOLAR POWER BANK WITH BUILT-IN TORCH | Recycled ABS Plastic 100% | 15.9 x 21 x 8 cm | 4.935 kg CO₂e

●



NEW

124472 | ALNAIR 5000 MAH 10W RECYCLED PLASTIC TYPE-C POWER BANK WITH BUILT-IN FLIP STAND AND 2-IN-1 CABLE | Recycled ABS Plastic
100% | 8 x 4.5 x 2.7 cm | 4.732 kg CO₂e





NEW

124450 | ACRUX 10.000 MAH 35W TABLET POWER BANK WITH BUILT IN TYPE-C CABLE - MADE FROM RECYCLED PLASTIC | Recycled ABS Plastic
100% | 8.7 x 6.6 x 2.6 cm | 4.896 kg CO₂e





NEW

124459 | ADHIL 10.000 MAH 10W RECYCLED PLASTIC POWER BANK WITH 2 BUILT-IN CABLES | Recycled ABS Plastic 100% | 15 x 6.8 x 1.6 cm | 4.994 kg CO₂e



NEW

124458 | INTAN 10.000 MAH 10W RECYCLED PLASTIC POWER BANK | Recycled ABS Plastic 100% | 13.5 x 6.5 x 1.4 cm | 4.932 kg CO₂e





124440 | ACAMAR 20.000 MAH 70W RECYCLED ALUMINIUM LAPTOP POWER BANK | Recycled Aluminium 100% | 15 x 6.8 x 2.9 cm | 5.615 kg CO₂e



124442 | ACBAB 10.000 MAH 15W MAGNETIC WIRELESS POWER BANK WITH 20W PD - MADE FROM RECYCLED PLASTIC | Recycled ABS Plastic 100% | 9.6 x 6.4 x 1.4 cm | 4.780 kg CO₂e



124441 | ACBAB 5000 MAH 15W MAGNETIC WIRELESS POWER BANK WITH 20W PD - MADE FROM RECYCLED PLASTIC | Recycled ABS Plastic 100% | 9.6 x 6.4 x 1.4 cm | 4.780 kg CO₂e

A GIFT AS UNIQUE AS YOUR BRAND.

Looking to create your exclusive gift?
Tailor-made to your exact requirements
with custom branding techniques and
products precisely matched to your
brand's Pantone colours — Create Your
Own makes it possible.

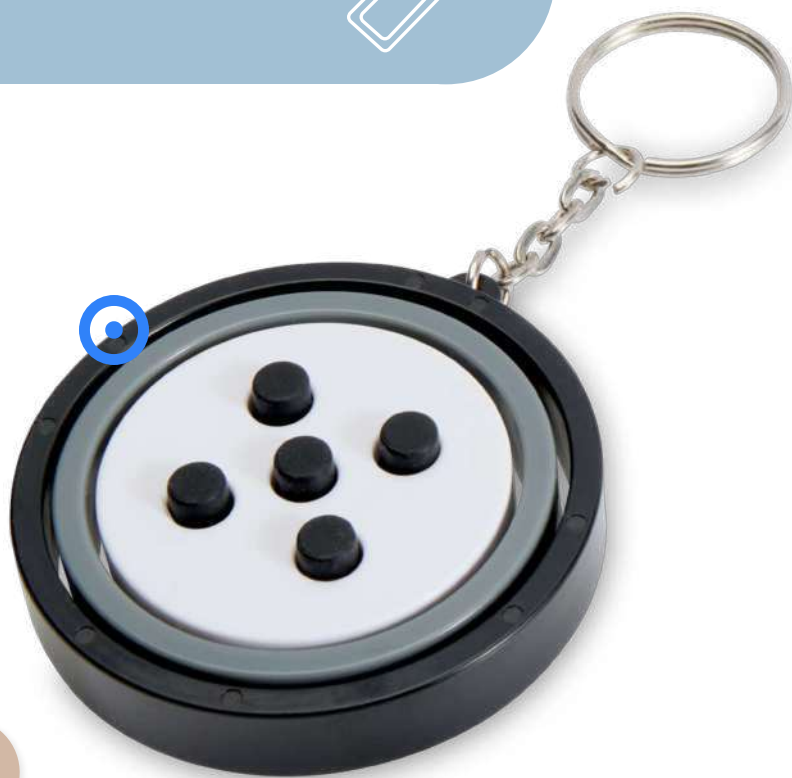
Enjoy short lead times, low minimum
order quantities, and full compliance
with industry standards for a seamless,
high-impact gifting experience.

Learn more >>

CREATE
YOUR
OWN







NEW

126342 | SPINX RECYCLED PLASTIC GYROSCOPE FIDGET KEYCHAIN |
Recycled ABS Plastic 50% | 11 x 5.8 x 1 cm | 0.064 kg CO₂e



NEW

126343 | FLICKER SLIDER FIDGET KEYCHAIN |
ABS Plastic 50% | 6.9 x 3.2 x 1.2 cm | 0.126 kg CO₂e



NEW

126344 | FIDGIX CONTROLLER FIDGET KEYCHAIN |
ABS Plastic 50% | 12.5 x 2.5 cm | 0.144 kg CO₂e

NEW

126341 | PUKY RECYCLED PLASTIC KEYCHAIN |
Recycled non-woven polypropylene 60% | 8.2 x 3 cm | 0.012 kg CO₂e



NEW

126340 | SNAPPER BAMBOO BOTTLE OPENER KEYCHAIN |
FSC certified bamboo 40% | 8.2 x 3 x 1.5 cm | 0.050 kg CO₂e





NEW

126386 | BELLIX BICYCLE BELL |
ABS Plastic 40% | 5.5 x 5 cm | 4.687 kg CO₂e

●●●●●



NEW

126388 | CLUTCHA UNIVERSAL PHONE HOLDER |
ABS Plastic 50% | 20 x 11.3 x 1.3 cm | 0.522 kg CO₂e

●



NEW

126390 | BEAMIX BICYCLE LIGHTS SET |
Recycled ABS Plastic 50% | 9.4 x 4.5 x 2.1 cm | 4.656 kg CO₂e

○



113508 | DANE 21" RPET UMBRELLA |
Pongee Polyester 100% | 99 x 27 cm | 2.700 kg CO₂e



109419 | JEFF 55" WINDPROOF GOLF UMBRELLA |
Polyester 100% | 106 x 140 cm | 2.970 kg CO₂e





NEW

126373 | DOSE 7-DAY MULTI-VITAMIN ORGANISER |
PP Plastic 100% | 14.9 x 2.8 x 2.4 cm | 0.091 kg CO₂e



NEW

126374 | CYCLE 7-DAY AM/PM MULTI-VITAMIN ORGANISER |
PP Plastic 100% | 17.5 x 8.7 x 3 cm | 0.351 kg CO₂e





NEW

126338 | HUSH EAR PLUGS |
Recycled ABS Plastic 80% | 6.5 x 4.2 x 1.7 cm | 0.041 kg CO₂e



NEW

126376 | GLIDER SLIDER MAKEUP MIRROR |
Recycled ABS Plastic 55% | 6.8 x 6.8 x 0.5 cm | 0.089 kg CO₂e

●●●



NEW

126375 | FILLA 5 ML PORTABLE REFILLABLE PERFUME BOTTLE |
PP Plastic 40% | 8.8 x 1.75 cm | 0.137 kg CO₂e

●●●●



NEW

126381 | BEAUTIX MANICURE SET | Recycled PET Plastic 45%,
Rubber 35% | 9.1 x 3.2 x 1.9 cm | 0.229 kg CO₂e




●●



NEW

1Z2633 | MYKIT FIRST AID PET TIN KIT |
Aluminium 100% | 0.407 kg CO₂e

●●●●●●



NEW

1Z2635 | MYKIT BIKE REPAIR TIN KIT |
Aluminium 100% | 0.407 kg CO₂e

●●●●●●



NEW

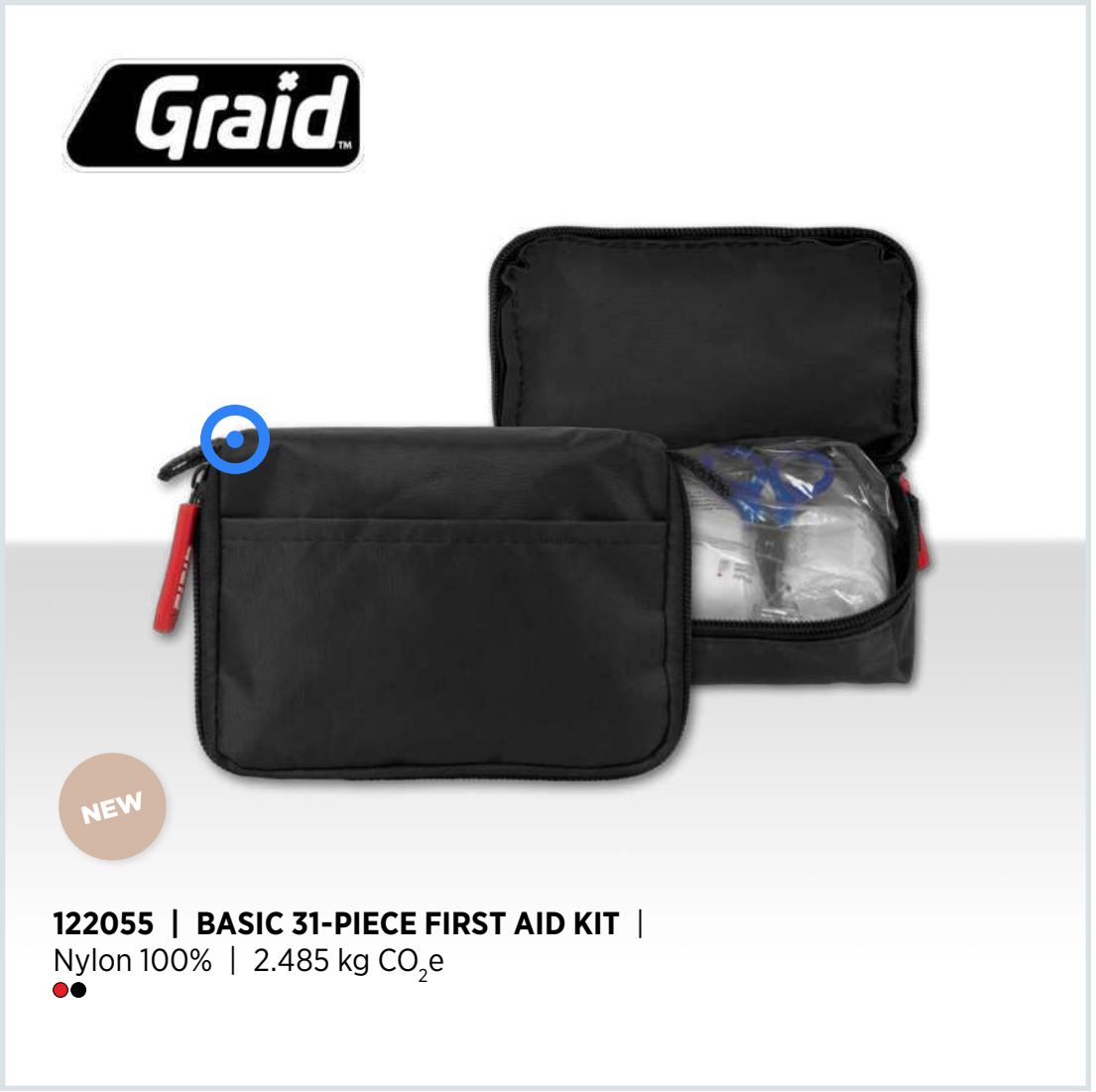
1Z2632 | MYKIT FIRST AID CAR TIN KIT |
Aluminium 100% | 0.407 kg CO₂e

●●●●●●



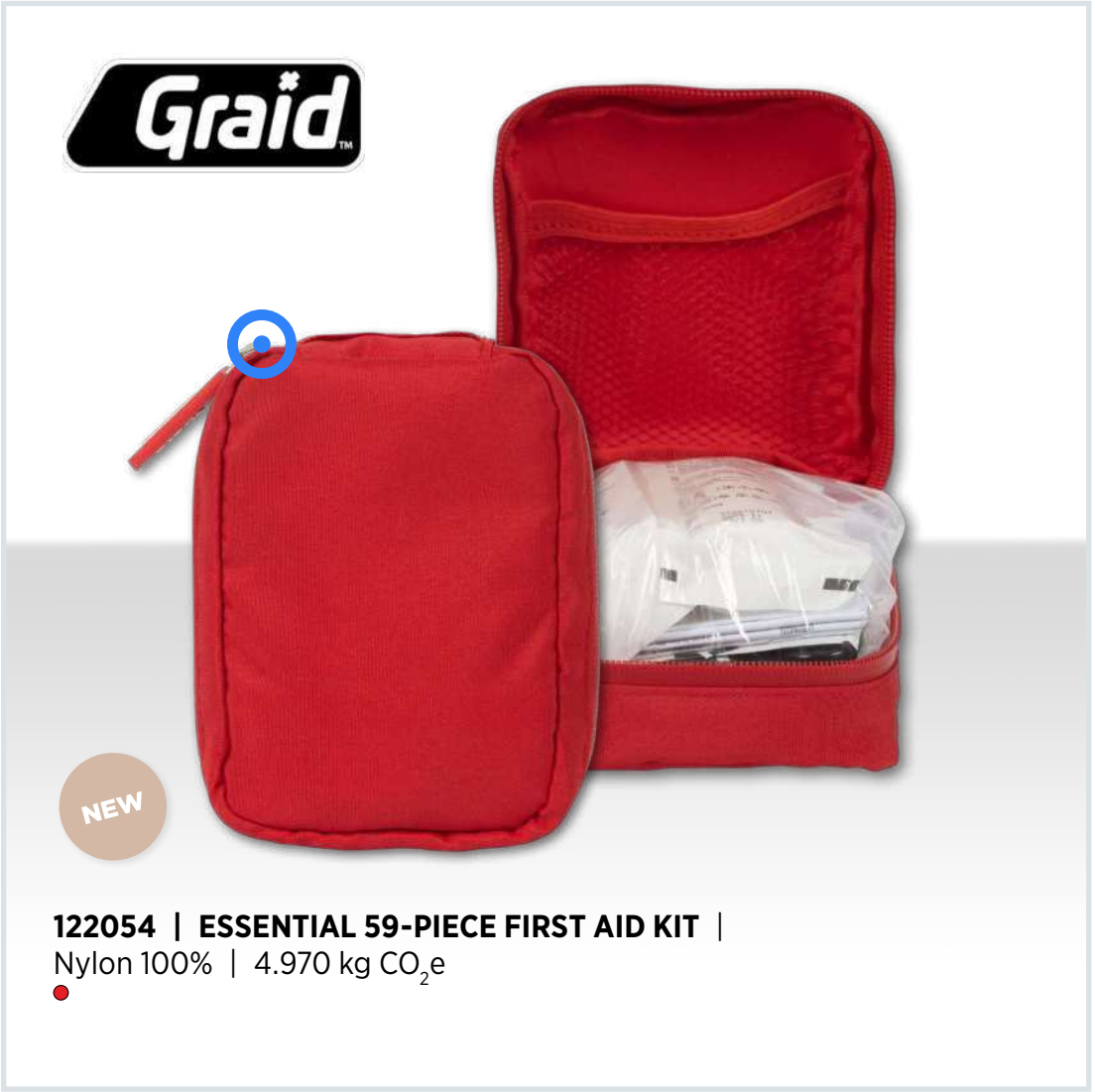
NEW

122631 | MYKIT FIRST AID TIN KIT |
Aluminium 100% | 0.407 kg CO₂e
●●●●●●



NEW

122055 | BASIC 31-PIECE FIRST AID KIT |
Nylon 100% | 2.485 kg CO₂e
●●



NEW

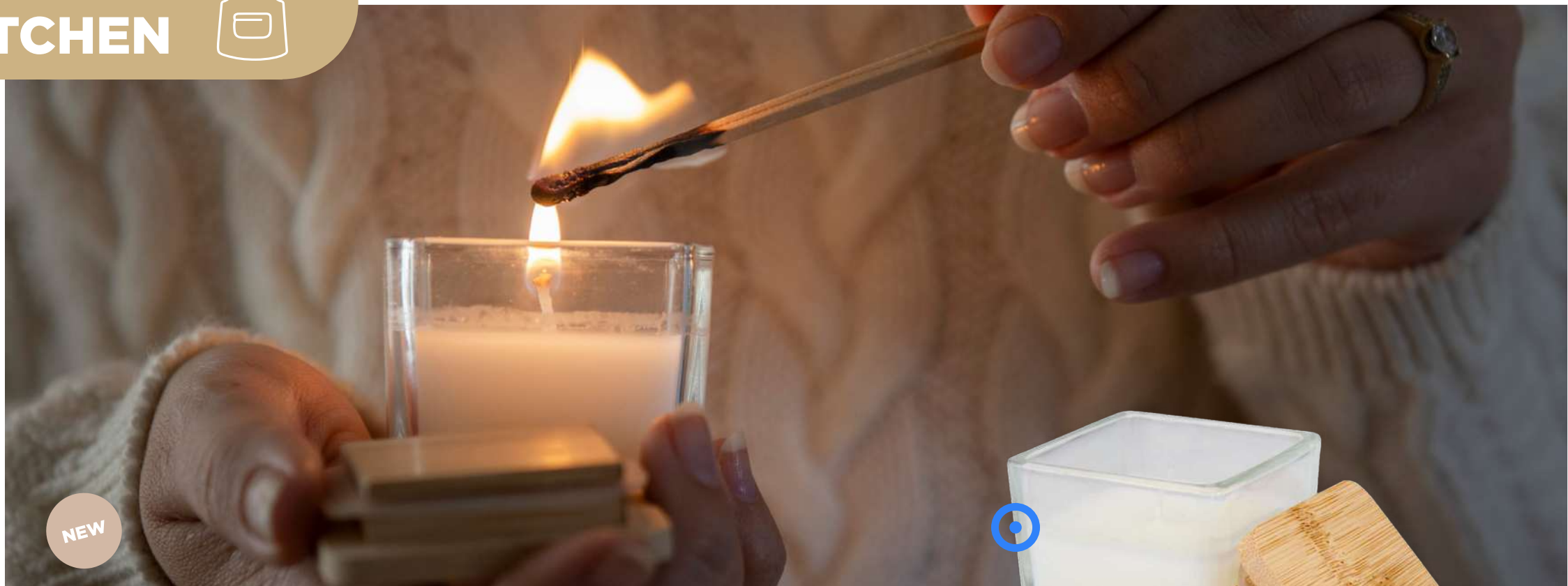
122054 | ESSENTIAL 59-PIECE FIRST AID KIT |
Nylon 100% | 4.970 kg CO₂e
●

A logo is more than a symbol—it's the heartbeat of your brand. When applied to product media, it transforms everyday items into powerful brand touchpoints. From endless possibilities on colour with digital print to more refined branding with laser engraving, the right printing technique can give your product a premium, reliable or trendy look. When used thoughtfully, your logo does not only represent your brand – it adds value. Turning a simple product into a lasting brand experience.

YOUR BRAND, THEIR EXPERIENCE BROUGHT TO LIFE WITH PRINT







NEW

126354 | AMBRA SQUARE GLASS CANDLE WITH BAMBOO LID |
Borosilicate glass 100% | 5.6 x 5.3 x 5.3 cm | 0.125 kg CO₂e



NEW

126352 | TINDRA SQUARE TIN CANDLE WITH VANILLA AROMA |
Aluminium 100% | 5.5 x 4.2 cm | 0.772 kg CO₂e



NEW

126353 | BLISSFUL HEART-SHAPED TIN CANDLE WITH VANILLA AROMA |
Aluminium 100% | 5.8 x 2.8 cm | 0.494 kg CO₂e





NEW

126368 | KIPPER MULTI-PURPOSE KITCHEN TOOL |
Recycled ABS Plastic 60% | 12.8 x 4.7 x 1.35 cm | 0.086 kg CO₂e
○●●●



NEW

126363 | CORE WINE STOPPER |
ABS Plastic 60% | Ø 3.9 x 4 x 4 cm | 0.115 kg CO₂e
●



NEW

126362 | CROC BAMBOO TRIVET - SMALL |
FSC certified bamboo 100% | 11.4 x 11.4 x 1.5 cm | 0.170 kg CO₂e
○



NEW

126364 | CROC BAMBOO TRIVET - LARGE |
FSC certified bamboo 100% | 18.5 x 5 x 1.5 cm | 0.273 kg CO₂e
○



NEW

113420 | SNAPPY LUNCH BOX AND CUTLERY SET |
 PP Plastic 100% | 11.5 x 5.8 x 21.5 cm | 0.954 kg CO₂e
 ○●●●●



NEW

113423 | DOVI 800 ML LUNCH BOX |
 PP Plastic 100% | 19 x 13 x 6 cm | 0.758 kg CO₂e
 ○●●●●●●





SEASONS



NEW

113421 | SUPO 480 ML DOUBLE-WALLED RECYCLED STAINLESS STEEL LUNCH POT | Recycled stainless steel 80% | Ø 9.8 x 9.8 x 14.3 x 9.8 cm | 1.973 kg CO₂e
○○

SEASONS



NEW

113422 | DOVERON 500 ML RECYCLED STAINLESS STEEL INSULATED LUNCH POT | Recycled stainless steel 80% | Ø 9.9 x 14.3 cm | 2.136 kg CO₂e
○●●●



SEASONS





SEASONS



NEW

126394 | EDGE ACACIA WOOD SERVING TRAY |
Acacia wood 100% | 24 x 23.5 x 1.5 cm | 0.563 kg CO₂e



SEASONS



NEW

126392 | JULIENNE ACACIA WOOD CHOPPING BOARD WITH HANDLE | FSC certified acacia wood 90% | 30 x 20 x 1.5 cm | 1.538 kg CO₂e

SEASONS



NEW

126393 | PRESTIGE ACACIA WOOD CHOPPING BOARD WITH BREAD KNIFE | Acacia wood 85% | 35 x 20 x 1.5 cm | 1.677 kg CO₂e





NEW

113329 | DOLLY GRS RECYCLED BLANKET |
GRS certified recycled polyester 90%, Acrylic
10% | 125 x 150 cm | 1.635 kg CO₂e
●●●



NEW

113515 | ASHEN GRS RECYCLED SHERPA BLANKET |
GRS certified recycled ABS
100% | 152 x 126 cm | 1.935 kg CO₂e
●●





PF Concept
Your product media expert

Disclaimer

- Printing shown on products represent a variety of techniques and positions.
- Other print techniques and positions available.
- Contact us for more information.
- Images representing people and activities in this catalogue are for inspiration purposes only. Products without article codes are not for sale. The images and logos, featured on the products are for visual purposes only and may differ from the recommended print technique. Licensed products are reserved for B2B activity only and cannot under any circumstances be offered for retail sale. Only products listed with item number are available.
- Some brands are not available in all regions.
- Printing and typesetting errors reserved. The seller accepts no liability for the consequences of printing and typesetting errors.
- The certification logos (e.g. FSC®, GRS®, etc.) used in this catalogue apply solely to the certified manufacturer PF Concept International Coöperatief U.A. Any other distributor of this catalogue is not a holder of these certifications and refers to the certification holder PF Concept.
FSC: CU-COC-877277
GRS/RCS/OCS: CU1019665MUL-2024-00137419



PF Concept

Your product media expert